

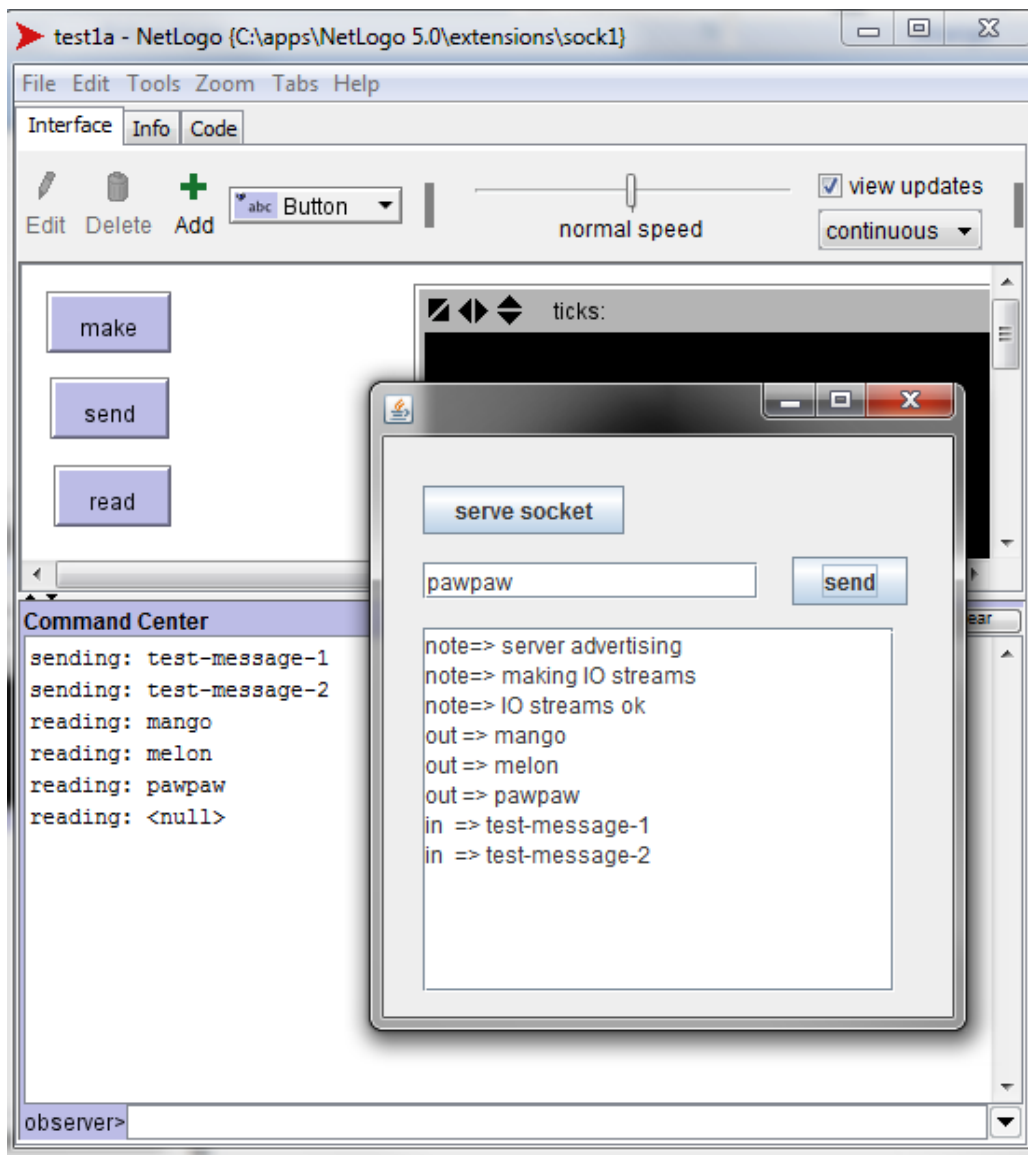
a socket connection for NetLogo

This is an example of a simple socket extension for NetLogo which allows netlogo to communicate with other (Java) applications via a socket.

The class files are bundled into a jar conforming to netlogo extension requirements, source files for the example are also provided.

running the example

The screen-shot below shows netlogo running test1a and the example java frame.



running the example

1. run the SocketExample.class file;
2. open test1a.nlogo in netlogo;
3. click the "serve socket" button in the SocketExample frame
 - you will see a message on the frame stating that it is advertising a socket;
4. click "make" on test1a.nlogo
 - you will see messages on the SocketExample frame showing that it has made I/O streams. If you have error output connected to netlogo you may also see messages here;
5. clicking the "send" button on the netlogo side will send a message of the form "test-message-#" to the java side which you will see displayed in the output area of the SocketExample frame, you will also see a message displayed on the netlogo side;
6. typing a message into the textfield on the java side and hitting the SocketExample send button will send a message to netlogo. This will be queued with any other unretrieved messages then retrieved & printed when the read button is pressed on the netlogo model.

development

As it stands, this extension is just an example. I intend to develop it further in the next few months. Please contact me if you use this example and/or would be interested in a more developed comms link with netlogo.